



# Minnesota

## TRUCKING FAST FACTS

### TRUCKING DRIVES THE ECONOMY

**137,600**

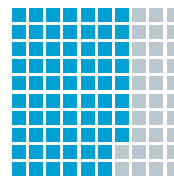
Trucking industry jobs  
in Minnesota (2018)



That's **1 in 18** jobs in the state



Trucking companies located in  
**Minnesota** (2019). Primarily small,  
locally owned businesses, these  
companies are served by a wide range of  
supporting businesses.



**67.6%**

of Minnesota  
communities depend  
exclusively on trucks to  
move their goods.



Percent of manufactured  
tonnage transported by  
trucks in the state.  
**That's 171,990 tons  
per day.** (2012)

- Total trucking industry wages paid in Minnesota in 2018 exceeded **\$7.2 billion**, with an average annual trucking industry salary of **\$52,397**.
- Heavy and tractor-trailer truck drivers held **34,860** jobs with an average annual salary of **\$48,710** (U.S. Bureau of Labor Statistics, 2018).

### SAFETY MATTERS

#### SAFETY FIRST

Minnesota Trucking Association members put safety first through:

- ✓ Improved driver training
- ✓ Investment in advanced safety technologies
- ✓ Active participation in industry safety initiatives at the local, state and national levels

#### CONTINUALLY IMPROVING

2017 fatal crash rate per  
100 million Vehicle Miles  
Traveled (VMT):

MN

**0.74**

USA

**1.42**

**69%** The amount by which the U.S.  
large truck fatal crash rate has  
dropped between 1975 and 2017.

#### COMMITMENT TO SHARING THE ROAD



The **Share the Road** program sends a team of professional truck drivers to communities around the country to teach car drivers about truck blind spots, stopping distances and how to merge safely around large trucks, all designed to reduce the number of car-truck accidents.



# Minnesota

## TRUCKING FAST FACTS



### \$ TRUCKING PAYS THE FREIGHT

#### THE INDUSTRY

**\$674 million**

Amount the trucking industry in Minnesota paid approximately in federal and state roadway taxes (2018).

The industry paid **37%** of all taxes owed by Minnesota motorists ...



... despite trucks representing only **10%** of vehicle miles traveled in the state.



#### INDIVIDUAL COMPANIES

As of January 2020, a typical five-axle tractor-semitrailer combination paid:

**\$6,333** + **\$8,906**  
state highway user fees and taxes federal highway user fees and taxes

These taxes were over and above the typical taxes paid by businesses in Minnesota.



#### ROADWAY USE

Miles of public roads in Minnesota (2018). **139,591**

Miles driven on public roads:

**All Motorists: 60.4 billion**



**Trucks: 6.2 billion**

### TRUCKS DELIVER A CLEANER TOMORROW

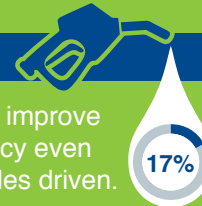
#### EMISSIONS

- ✓ **43%** of U.S. commercial trucks are now powered by the newest-generation, near-zero emissions diesel technology.
- ✓ Medium- and heavy-duty trucks contribute just **23%** of all transportation-related greenhouse gas (GHG) emissions in the U.S. and represent only **6%** of total U.S. GHG emissions.

#### FUEL CONSUMPTION

The trucking industry continues to improve energy and environmental efficiency even while increasing the number of miles driven. In 2018:

- Combination trucks accounted for just **17%** of the total highway transportation fuel consumed
- Combination trucks consumed nearly **100 billion** fewer gallons of fuel than passenger vehicles in the U.S.



#### PARTNERSHIPS



Through the **U.S. Environmental Protection Agency's (EPA) SmartWay Transport Partnership**, the trucking industry is working with government and businesses to quantify greenhouse gas emissions and take steps to reduce them.